

Nov. 17-18-20-21-24-25-1919

Nov. 2 1919

Survey of County Road - Wilson Lane

in N.E. 1/4 Sec. 25
T. 8 + N. R. 2 W
Beg. at Bolt in
cty. of Str. near
E. line 3d 1/4 Sec.

36

Continued on page 38

Ties to spike
 N.W. 78.95 = pole
 S. 32.1 = Fence
 S.W. 62.4 = pole
 N. 31.9 = blazed post in fence
 S.W. 108.57 = N.E. Cor. Patch
 Sec. Co. Notes - E. 129.8

188.0 N.W. 1/4 P.P.
8.2 ft. S. to ch.

Pole in fence

N.W. 69.75 = pole
 S.W. 48.75 = pole
 E 48.15 = pole
 M.E. log. 1 ft. = S.W. Cor.
 Brick house

Apr. 24 10 x 56 = Hub
 on new 14 ft. post
 To flag on
 Globe Milling
 Pyramid

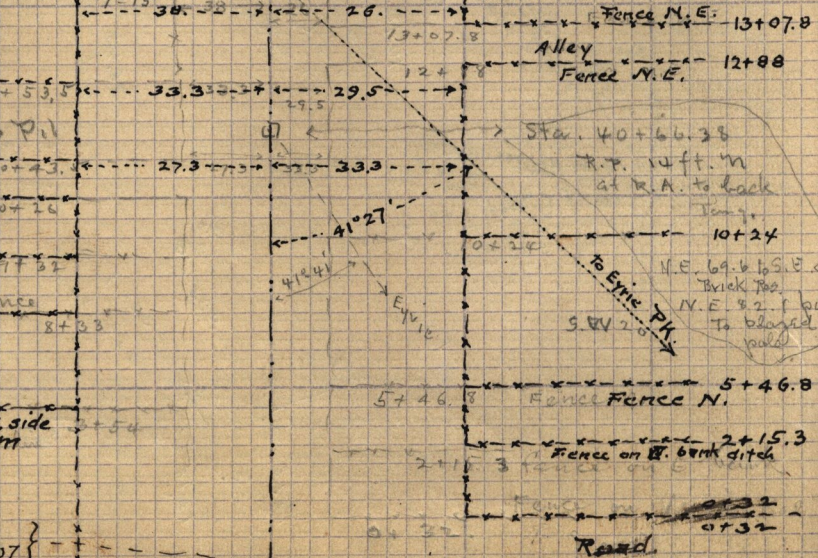
156.6
6
94.0

160.4

N.W. 11.86 ft. = blazed pole
 S.E. 47.82

Angle Left 1° 15' Hub. 13+80.95 = 12 (check back 1380.85)

12+53.5
 11+80.95
 10+43.5
 10+26
 9+32
 8+33
 7+54
 Fence on W. side
 Barry farm



City Stations
 by these notes = { A 133+51.
 B 0+72.07 }
 See Book K, pg 69

□ = Bolt - Sta. 0, on E. line or near E. lines.